



MONTHLY MEMBERSHIP PROGRESS REPORT

District 4 L2

Results as of: 09/30/2017

GMT: HOWARD HUDSON

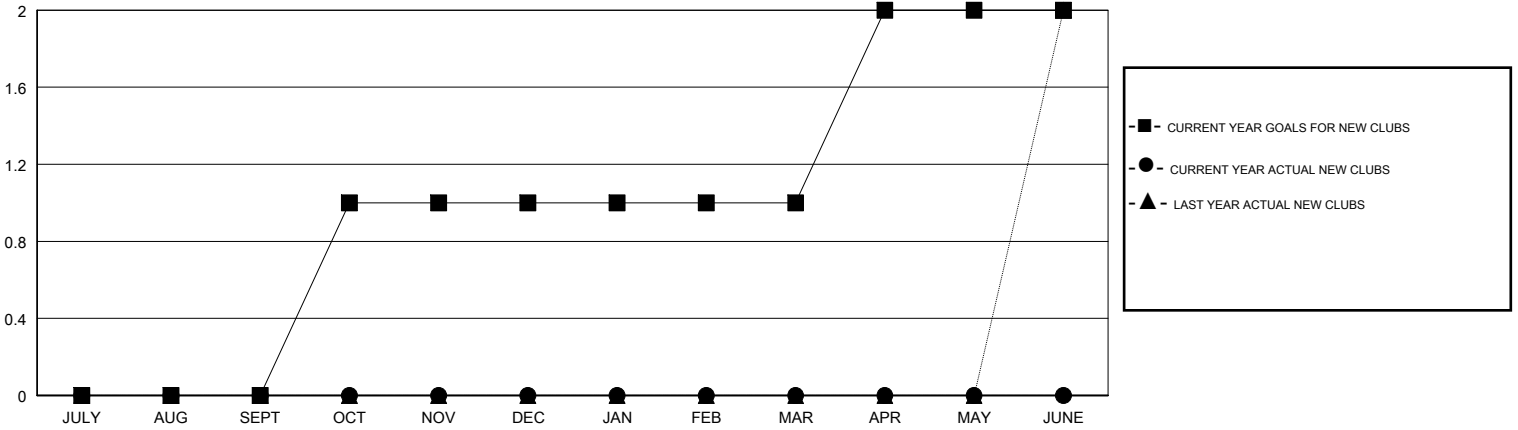
LOCATION CALIFORNIA

GMT CA

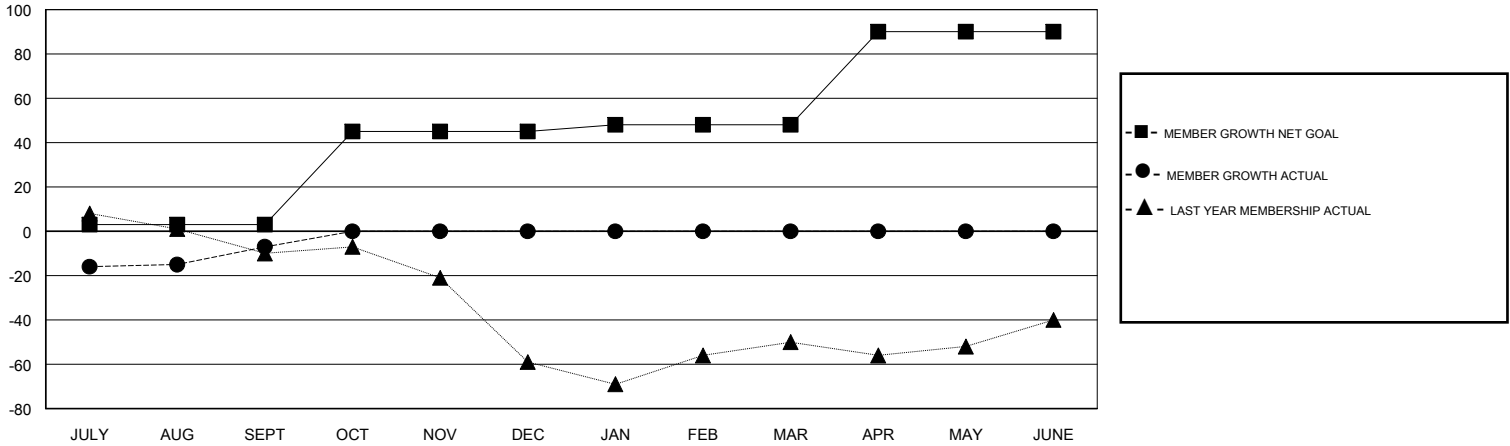
| Clubs | | | |
|-----------------------|---------------|-----------|---------------|
| RESULTS FOR 2017-2018 | | | |
| QUARTER | NEW CLUB GOAL | NEW CLUBS | DROPPED CLUBS |
| JULY/AUG/SEPT | 0 | 0 | 0 |
| OCT/NOV/DEC | 1 | 0 | 0 |
| JAN/FEB/MAR | 0 | 0 | 0 |
| APR/MAY/JUNE | 1 | 0 | 0 |

| Members | | | |
|-----------------------|------------------------|----------------------|--|
| RESULTS FOR 2017-2018 | | | |
| QUARTER | MEMBER GROWTH NET GOAL | MEMBER GROWTH ACTUAL | DROPPED MEMBERS ACTUAL (including transfers) |
| JULY/AUG/SEPT | 3 | 74 | 81 |
| OCT/NOV/DEC | 42 | 0 | 0 |
| JAN/FEB/MAR | 3 | 0 | 0 |
| APR/MAY/JUNE | 42 | 0 | 0 |

GOALS AND ACTUAL NEW CLUBS CUMULATIVE



GOALS AND ACTUAL MEMBERS CUMULATIVE



| |
|------------------|
| DROPPED CLUBS: 0 |
|------------------|

19 CLUBS OF 48 ADDED 1 OR MORE NEW MEMBERS

| GENDER DISTRIBUTION | |
|--|--------------|
| MALE | 735 (60.00%) |
| FEMALE | 490 (40.00%) |
| Women Percentage Fiscal Year Goal: 10% | |

| DROPPED MEMBERS | |
|-----------------|-----------|
| DECEASED | 1 |
| CLUB CANCELLED | 0 |
| OTHER | 79 |
| TOTAL | 80 |

[CLICK HERE FOR CUMULATIVE MEMBERSHIP DATA](#)

| | |
|---------------------------------|-----|
| TOTAL FAMILY UNIT MEMBERS | 143 |
| FAMILY MEMBERS PAYING HALF DUES | 73 |